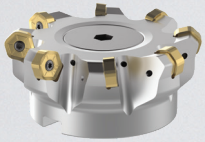


# MILLING

**SPECIAL OFFERS\***

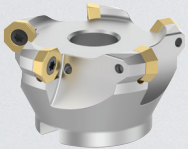
MAY - AUGUST 2024

**BUY 10 INSERTS PER POCKET,  
GET 1 CUTTER BODY **FREE!\*******FACE MILLING****Dodeka™ & Dodeka Mini**

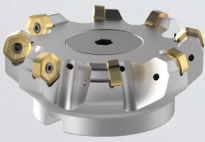
Most comprehensive face milling platform on the market. Providing an excellent cost-per-cutting edge with market leading performance

**EXTRA SAVINGS**

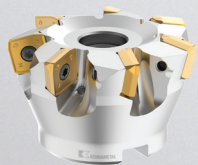
Try the new -LM, -LP, -GM or -GP insert geometries and get an additional 10% discount on net price\*

**7745VOD**

Ideal for roughing, semi-finishing and finishing of steels, stainless steels, high-temp alloys, cast irons and aluminium alloys

**HIGH-FEED MILLING****Dodeka High-Feed**

Engineered to provide you with superior MRR and productivity through high-feed rates for roughing operations

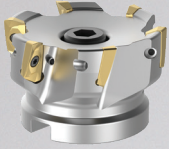
**7792VX**

Designed for high-feed milling applications with superior surface generation

**EXTRA SAVINGS**

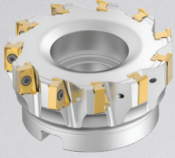
Try the new -M or -M41 insert geometries and get an additional 10% discount on net price\*

## SHOULDER MILLING



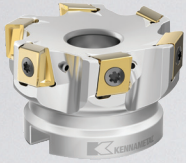
### Mill 1™

Multifunctional platform with one insert style to improve productivity and reduce inventory and machining costs



### Mill 4™

Specially engineered to achieve excellent surface quality and higher MRR in shoulder milling applications



### Mill 4-12KT™

Proprietary insert design that delivers unprecedented stability in steel and cast-iron applications

## COPY MILLING



### 7713VR

Unique patented pocket system prevents the inserts from rotating in the pocket during heavy-feed machining and unstable conditions

## GENERAL PURPOSE SOLID END MILLING



### BUY 3, GET THE 4TH FOR FREE

### GOmill™ GP

Offers plunging, slotting and profiling with long tool life on a wide range of workpiece materials

\*Promotion only applicable to products listed above that are part of the **FIRST CHOICE PROGRAM** or are a new Innovations platform. Valid May 1 - August 31, 2024 in Europe, Middle East and Africa. Kennametal reserves the right to revise or cancel this promotion at any time.